

# **GM<sup>2</sup>** *German Mining & Minerals*

an INROS LACKNER and ECTerra cooperation

GM<sup>2</sup>'s expertise is available worldwide and covers all relevant areas of consultancy and engineering:

- Competent Person
- Preparation of NI43-101 and JORC Technical Reports
- Resource and reserve estimation
- Scoping studies and strategic planning
- Feasibility studies
- Due diligence reviews
- Economic and financial assessments
- Optimization of existing studies and operations
- Mine and process design and engineering
- Infrastructure design and engineering, including railways, roads, power and ports
- Environmental and social management planning
- Closure and remediation studies and implementation
- Construction oversight, including preparation of tender and contract documents
- Operations reviews for benchmarking and cost/productivity improvements
- Technical and financial reviews for debt and equity financing
- Property valuations and privatisation studies
- Exchange listing and regulatory reporting
- Independent investor advisory services
- Property inspections for statutory, insurance or other purposes
- Litigation support

## CONTACT

www.GM2EXPERTS.com | Linzer Str. 3 | 28359 Bremen | Germany | Phone +49 421 658 41 0 | info@gm2experts.com



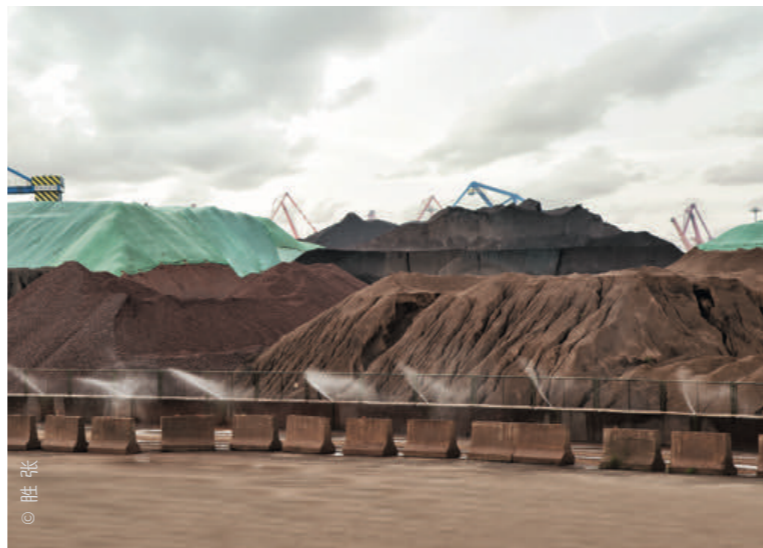
***German Mining & Minerals***  
an INROS LACKNER and ECTerra cooperation



©Sergey Milovidov



©Auraco



© 胜张

## PROFILE

ECTerra is an exploration and mining consultancy company specialising in developing projects from grass roots exploration through to production. ECTerra brings together professionals from various disciplines including exploration geology, mining operations, geotechnics, health and safety, finance, security, community relations and social development.

Inros Lackner stands for sophisticated engineering, planning and design solutions. Our ability to consistently provide such solutions is based on our unique expertise and experience profile, developed over many years in the industry. With interdisciplinary teams we can ensure technically, ecologically and economically optimal solutions.

German Mining & Minerals (GM<sup>2</sup>) has been founded to support clients in the Mining Industry with a complete set of integrated de-

sign, engineering and mining services, which have been continually developed during our company's long history. Our service portfolio is focused to provide the client a no fuss, one-stop-shop strategic consultancy and multidisciplinary professional services from exploration via mining activities to transport infrastructure and logistics.

German Mining & Minerals performs engineering, design and project management services with a philosophy of value for money to the client. We will design a project development plan, source the necessary skills within our team then implement, monitor and evaluate the process while seconded into your company giving you the full benefit of our skills and time. We have a proven record of good management; our team has occupied executive and senior supervisory roles at a number of projects delivering results to our clients.